



CLINICAL NURSE EDUCATOR: COMPETENZE ED APPLICABILITA' NEL CONTESTO ITALIANO DI AREA CRITICA

DR. LAPROCINA MATTEO

DR. LOPEZ POLLAN RODRIGO

DOTT.SSA PINTO FLORIANA

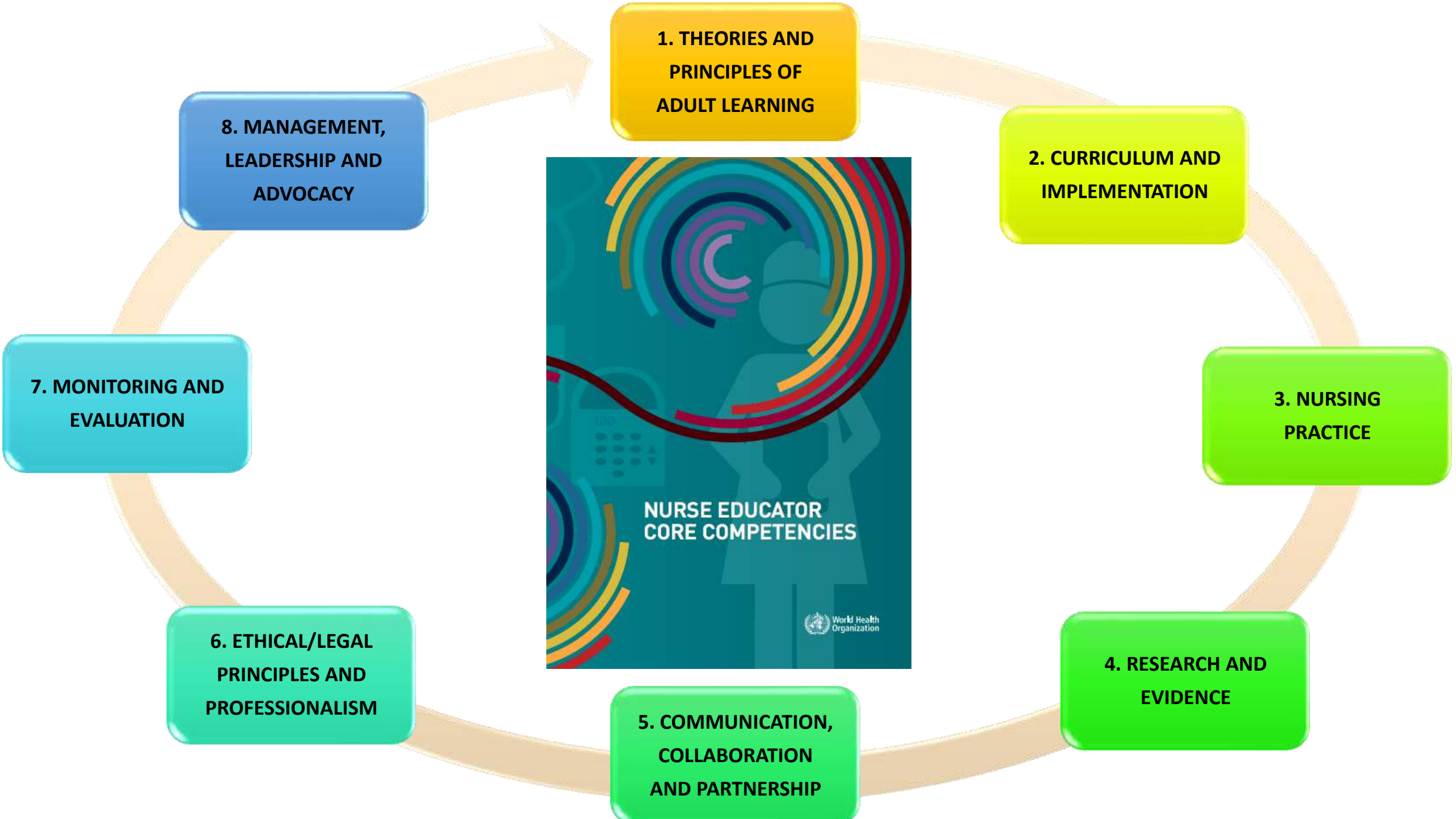
DR. ROSATI MORIS

CNE – CLINICAL NURSE EDUCATOR

- The Clinical Nurse Educator (CNE) guides learning within the highly contextualized clinical setting (Gaberson and Oermann, 2010, p. 67).
- The National League for Nursing (NLN) defines nurse education as a *“speciality area and an advanced practice role within professional nursing”* (NLN, 2012, 5).
- Nurse Educators should have high competency. They should own the broad experience of knowledge, abilities and characters to adopt and apply new nurse education approaches (WHO, 2016, p 1-30).
- “Nurse Educators [...] educate nursing at all levels, from certified nursing assistants to doctorally prepared current and future nurse educators, clinicians, and researchers” (Oermann & Frank, 2018, p. 3).

NURSE EDUCATOR COMPETENCIES

- In 2002 the Council on Collegiate Education for Nursing focused on the expected competencies of Clinical Nurse Educators (SREB, 2002).
- In 2016, the WHO launched the Nurse Educator Care Competencies as part of the “*Global strategy on human resources for health: Workforce 2030*” (WHO, 2016, p. 5).
- In the “*Global Strategic Directions for Nursing and Midwifery 2021-2025*”, the World Health Organisation (WHO) identifies nurse education as highly important when it comes to meeting the global need for skilled nurses (WHO, 2021).
- The competencies are intended to help guide the educational preparation of Clinical Nurse Educator, ensure educational quality and accountability, develop a competence-based curriculum and contribute to improving the provision of nursing care and outcomes of health services.



NEW AGENDA FOR NURSE EDUCATOR EDUCATION WITHIN EUROPE

- It's a three year Erasmus+ funded research and development project.
- It was established in spring 2020 and the project was launched in September 2020.
- The project aims to take the first steps in order to harmonize and uniform the nurse educator education within Europe.
- The partners in the project are: Finland (the coordinator), Malta, Scotland, Slovakia and Spain

CNE & EUROPE



INTERNATIONAL JOURNAL OF HEALTH PROFESSIONS

Volume 9, Issue 1, 2022, Pages 67–77, ISSN 2296-990X, DOI: 10.2478/ijhp-2022-0006



NursingOpen Open Access WILEY

Nurse educator education: EMPIRICAL RESEARCH QUANTITATIVE

a descriptive study

Review

An integrative review of the continuing professional development needs for nurse educators



Jamie Smith ^{a,*}, Susanne
Juha Pajari ^b, Maria Cas

Going global yet focusing on the local: A programme for nurse educators

^a School of Health in Social Science, The

^b University of Eastern Finland, Faculty of

^c Department of Nursing Science, Faculty of

^d Institute of Health and Nursing Science,

^e Faculty of Health Sciences, University of

^f Universitat Internacional de Catalunya, I

^g Department of Nursing, Faculty of Social

^h Department of Nursing Science, Faculty of

Cassar Maria ^{a,*}, Fuster-Linares Pilar ^b, Kean Susanne ^c, Elonon Imane ^d, Camilleri Michelle ^a

^a University of Malta, Malta

^b Universitat Internacional de Catalunya, Spain

^c University of Edinburgh, Scotland, UK

^d University of Turku, Finland



GUIDELINES FOR THE PROVISION OF INTENSIVE CARE SERVICES

Version 2.1
July 2022



National Standards for Adult Critical Care Nurse Education

Core curriculum and competency development
for registered nurses in adult critical care



**Intensive care as a positive place to
work: Workforce wellbeing best
practice framework**



2023 NSI National Health Care Retention & RN Staffing Report

*Published by: NSI Nursing Solutions, Inc.
www.nsinursingsolutions.com.*



Education at a Glance 2023

OECD INDICATORS



BENEFITS vs CHALLENGES OF CNE IN ICU

BENEFITS

- Continuous professional development
- Role model
- Leadership, value and trust
- Support and motivation
- Positive culture
- Staff retention
- Quality of care

CHALLENGES

- Educational preparation
- Lack of managerial support
- Ambiguity of the role
- CNE/RN ratio



FINE

